



**County Health
Rankings & Roadmaps**
A Healthier Nation, County by County

COUNTY HEALTH RANKINGS & ROADMAPS: FROM DATA TO ACTION

Bridget Booske Catlin PhD

*Deputy Director, County Health Rankings & Project Director,
County Health Roadmaps*

University of Wisconsin Population Health Institute

May 10, 2012





OUTLINE

Rankings Model and Measures

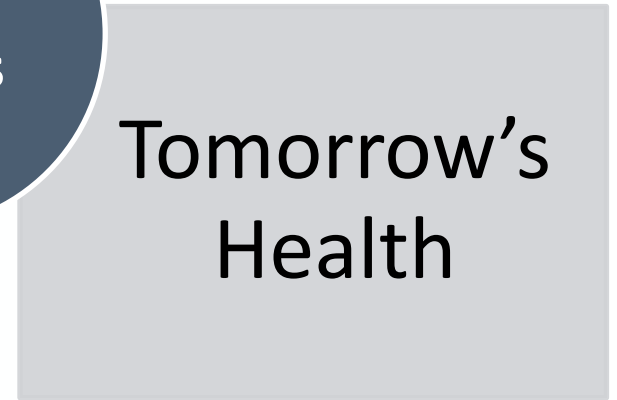
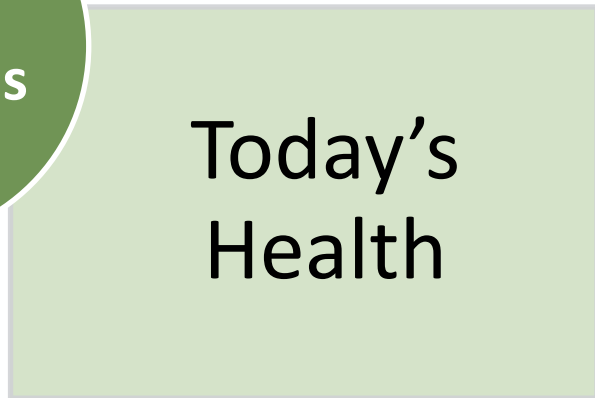


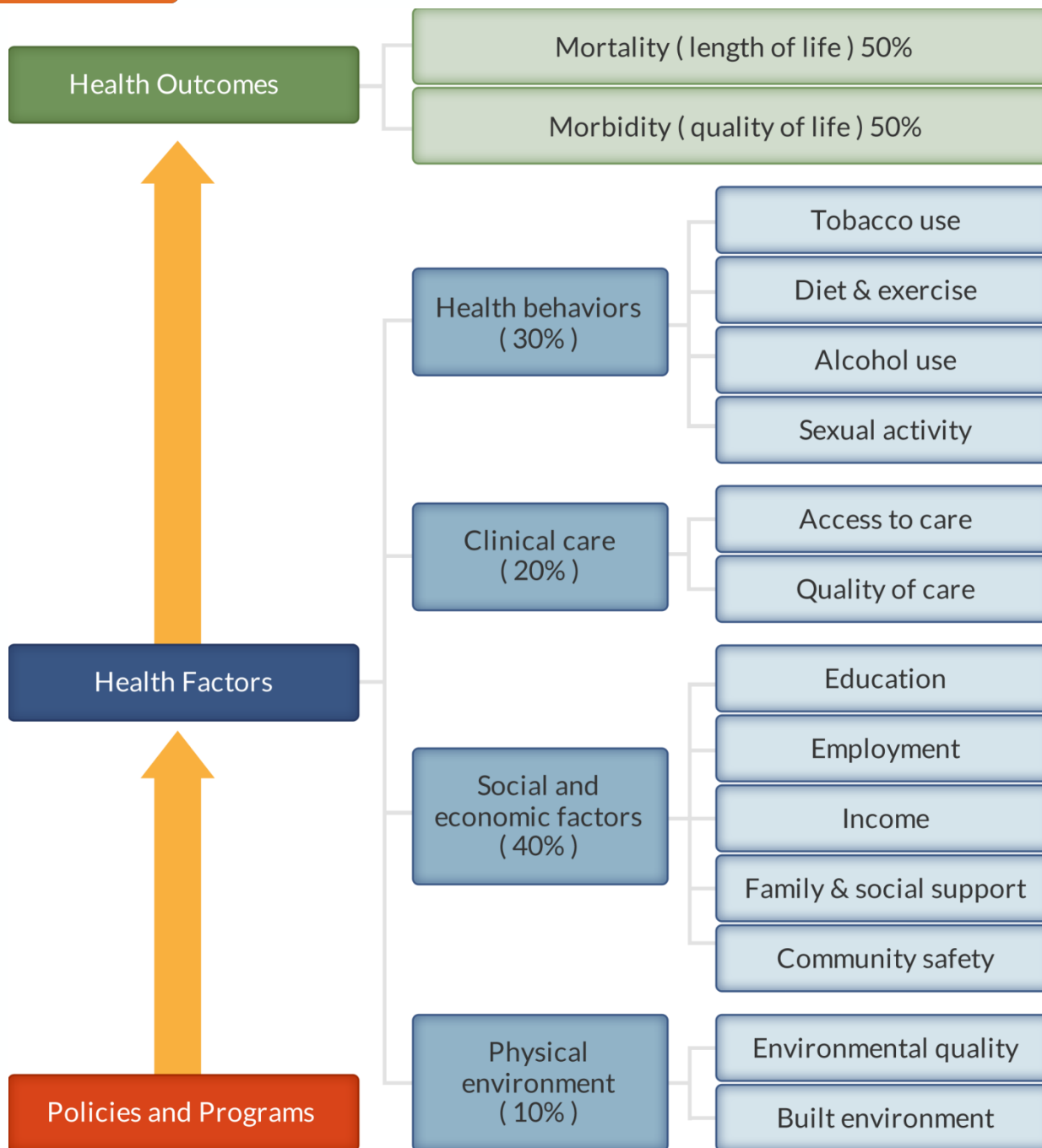
Adams County Deep Dive

Moving to Action



COUNTY HEALTH RANKINGS: 2 RANKINGS







How are measures selected?

- ▶ Reflect important aspects of population health that can be improved
- ▶ Valid, reliable, recognized and used by others
- ▶ Available at the county-level
- ▶ Available for free or low cost
- ▶ As up-to-date as possible
- ▶ Fewer measures better than more



www.countyhealthrankings.org

The screenshot displays the website's navigation and main content area. At the top, there are two tabs: "Rankings" (selected) and "Roadmaps". Below the tabs is a search bar with the placeholder text "Search for Your County" and a magnifying glass icon. To the right of the search bar is a link that says "Learn about the Data & Methods >".

The main content area features a header that reads "SELECT A STATE TO ACTIVATE COUNTIES". Below this header is a map of the United States where each state is outlined and labeled with its two-letter abbreviation. The map includes a zoom control in the top right corner with a "+" sign for zooming in and a "-" sign for zooming out.



OUTLINE

***Rankings* Model and Measures**

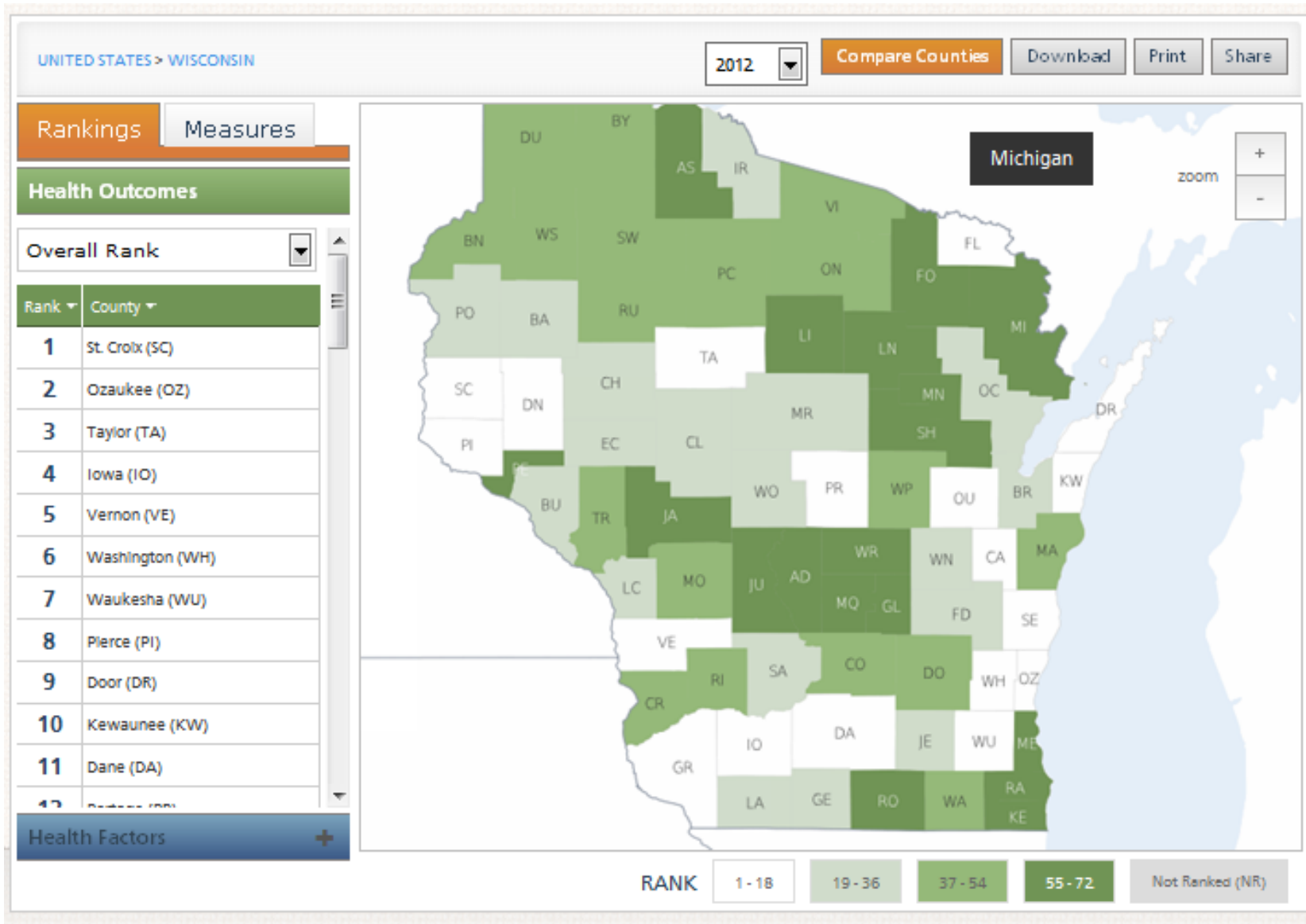
Adams County Deep Dive



Moving to Action



WISCONSIN: HEALTH OUTCOMES MAP



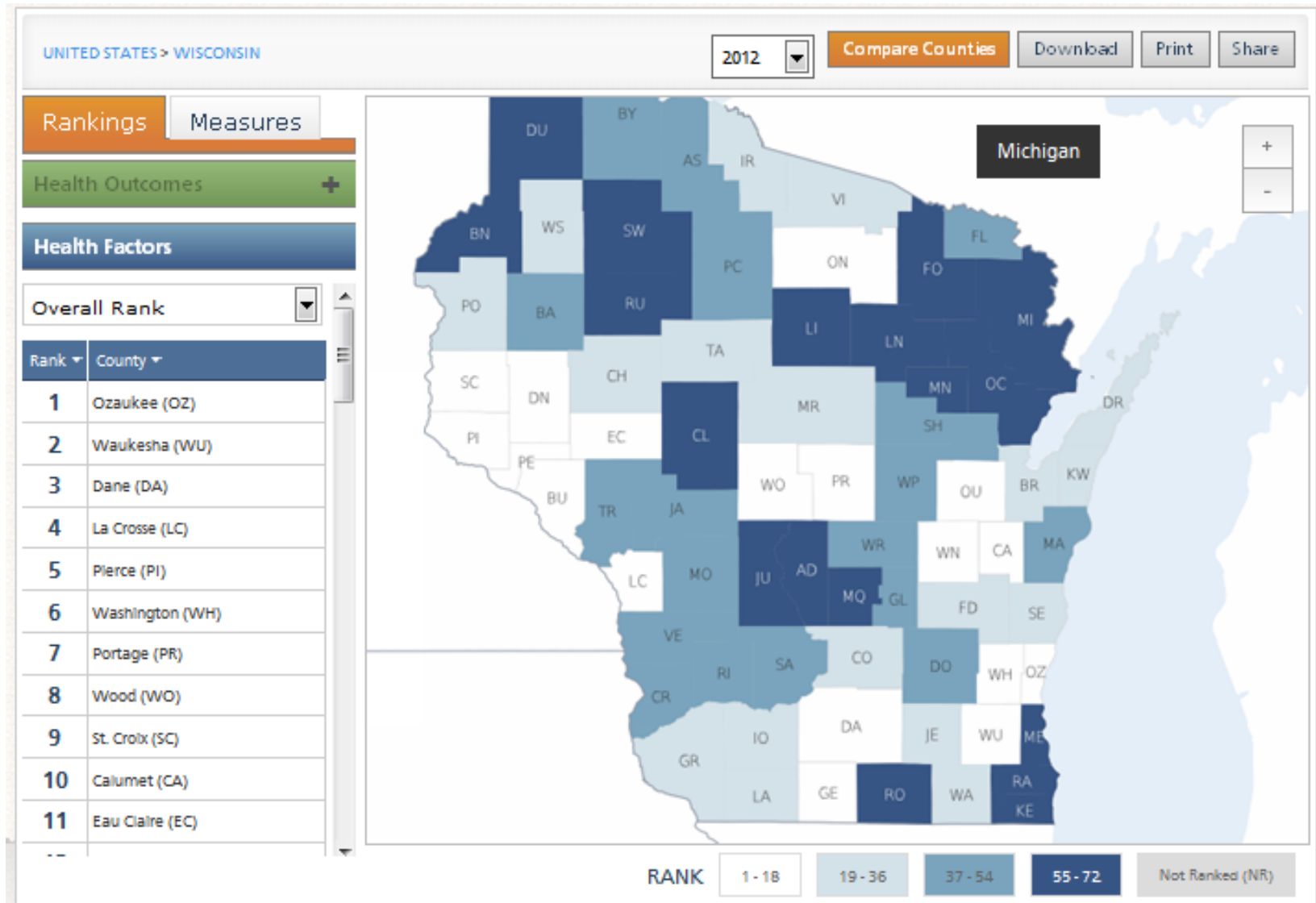


ADAMS COUNTY SNAPSHOT: HEALTH OUTCOMES

	Adams County	Error Margin	National Benchmark*	Wisconsin	Trend	Rank (of 72)
Health Outcomes						69
MORTALITY						65
Premature death	7,642	6,213-9,072	5,466	6,124		
MORBIDITY						71
Poor or fair health	17%	11-26%	10%	12%		
Poor physical health days	3.3	2.2-4.4	2.6	3.3		
Poor mental health days	4.3	2.5-6.1	2.3	3.0		
Low birthweight	8.2%	6.6-9.7%	6.0%	6.9%		



WISCONSIN: HEALTH FACTORS MAP





ADAMS COUNTY SNAPSHOT: HEALTH BEHAVIORS

	Adams County	Error Margin	National Benchmark*	Wisconsin	Trend	Rank (of 72)
Health Factors						70
HEALTH BEHAVIORS						69
Adult smoking	26%	19-33%	14%	20%		
Adult obesity	33%	27-39%	25%	29%		
Physical inactivity	27%	21-32%	21%	23%		
Excessive drinking	21%	15-29%	8%	24%		
Motor vehicle crash death rate	28	20-37	12	15		
Sexually transmitted infections	143		84	372		
Teen birth rate	49	42-57	22	31		



ADAMS COUNTY SNAPSHOT: CLINICAL CARE

	Adams County	Error Margin	National Benchmark*	Wisconsin	Trend	Rank (of 72)
CLINICAL CARE						64
Uninsured	13%	12-15%	11%	11%		
Primary care physicians	2,536:1		631:1	744:1		
Preventable hospital stays	56	48-63	49	59		
Diabetic screening	87%	79-95%	89%	89%		
Mammography screening	70%	61-78%	74%	73%		



ADAMS COUNTY SNAPSHOT: SOCIAL & ECONOMIC FACTORS

	Adams County	Error Margin	National Benchmark*	Wisconsin	Trend	Rank (of 72)
SOCIAL & ECONOMIC FACTORS						69
High school graduation	90%			86%		
Some college	44%	39-49%	68%	63%		
Unemployment	11.1%		5.4%	8.3%		
Children in poverty	29%	21-36%	13%	19%		
Inadequate social support	20%	14-26%	14%	17%		
Children in single-parent households	35%	28-42%	20%	29%		
Violent crime rate	140		73	275		



ADAMS COUNTY SNAPSHOT: PHYSICAL ENVIRONMENT

	Adams County	Error Margin	National Benchmark*	Wisconsin	Trend	Rank (of 72)
PHYSICAL ENVIRONMENT						33
Air pollution-particulate matter days	4		0	5		
Air pollution-ozone days	0		0	1		
Access to recreational facilities	5		16	11		
Limited access to healthy foods	4%		0%	6%		
Fast food restaurants	27%		25%	41%		



COMPARISONS

	Wisconsin	Adams	Taylor	Waushara	
Health Outcomes			69	3	56
MORTALITY			65	8	60
Premature death	6,124	7,642	4,878	7,288	
MORBIDITY			71	3	40
Poor or fair health	12%	17%	7%	10%	
Poor physical health days	3.3	3.3	2.6	3.4	
Poor mental health days	3.0	4.3	2.2	2.9	
Low birthweight	6.9%	8.2%	5.5%	6.6%	



COMPARISONS

	Wisconsin	Adams	Taylor	Waushara
Health Factors		70	31	53
HEALTH BEHAVIORS		69	13	43
Adult smoking	20%	26%	16%	16%
Adult obesity	29%	33%	28%	33%
Physical inactivity	23%	27%	25%	25%
Excessive drinking	24%	21%	28%	23%
Motor vehicle crash death rate	15	28	20	26
Sexually transmitted infections	372	143	73	125
Teen birth rate	31	49	22	37
CLINICAL CARE		64	33	55
Uninsured	11%	13%	12%	13%
Primary care physicians	744:1	2,536:1	1,604:1	1,546:1
Preventable hospital stays	59	56	59	68
Diabetic screening	89%	87%	92%	93%
Mammography screening	73%	70%	79%	75%



COMPARISONS

	Wisconsin	Adams	Taylor	Waushara	
SOCIAL & ECONOMIC FACTORS			69	44	53
High school graduation	86%		90%	97%	92%
Some college	63%		44%	45%	45%
Unemployment	8.3%		11.1%	10.5%	10.0%
Children in poverty	19%		29%	22%	23%
Inadequate social support	17%		20%	16%	16%
Children in single-parent households	29%		35%	22%	28%
Violent crime rate	275		140	86	59
PHYSICAL ENVIRONMENT			33	34	26
Air pollution-particulate matter days	5		4	2	5
Air pollution-ozone days	1		0	0	0
Access to recreational facilities	11		5	10	8
Limited access to healthy foods	6%		4%	10%	0%
Fast food restaurants	41%		27%	33%	29%



OUTLINE

***Rankings* Model and Measures**

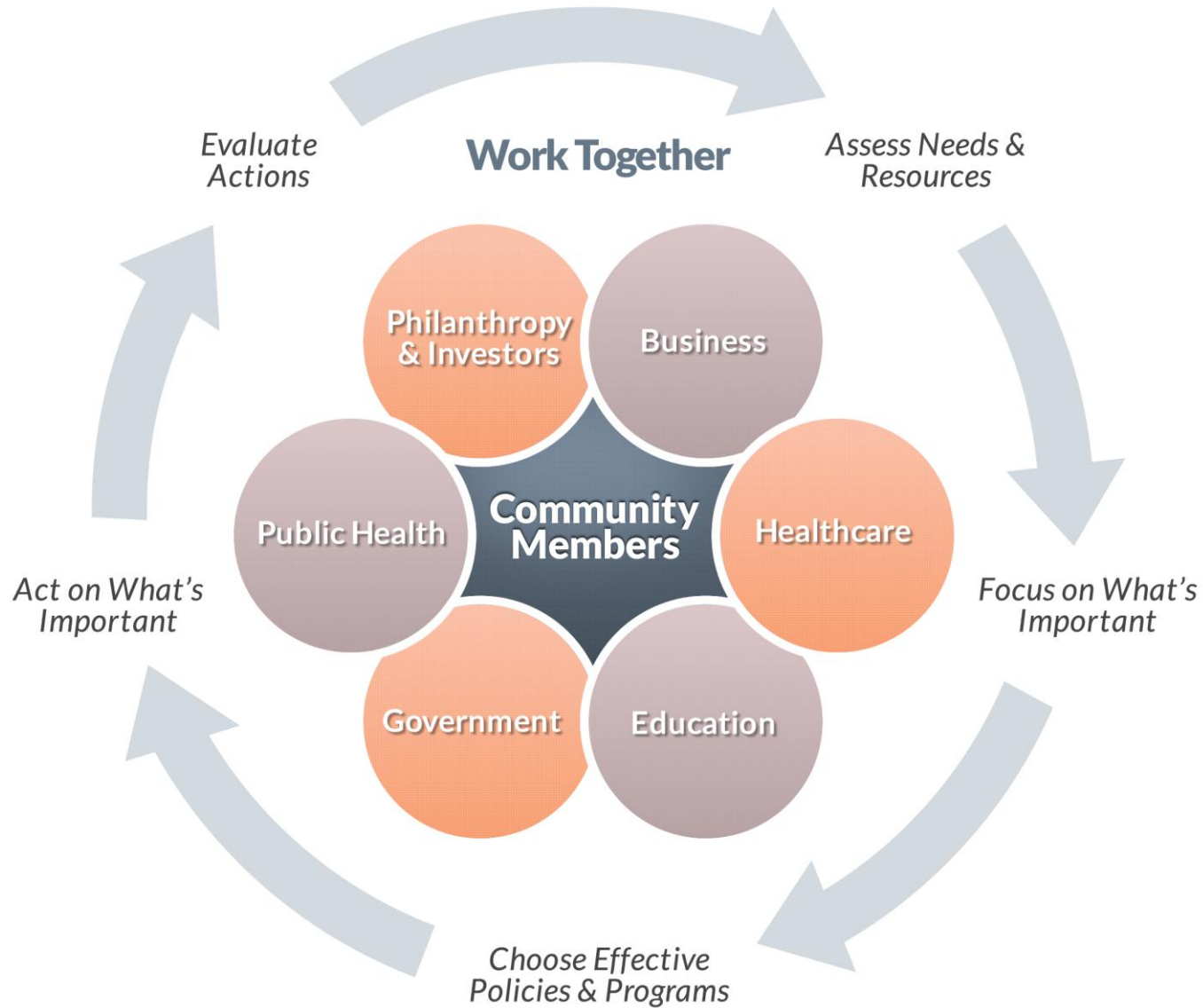
Adams County Deep Dive

Moving to Action





TAKE ACTION





www.countyhealthroadmaps.org



Rankings

Home
Build Your Roadmap

Opportunities
Find Funding and Resources

Roadmaps

Action Center
How You Can Help

Connections
Connect and Collaborate

[Home](#)



COUNTY HEALTH ROADMAPS

Roadmaps to Health

The *County Health Rankings* illustrate what we know when it comes to what's making people sick or healthy, but understanding your county's rankings is only one component of improving your community's health. The *County Health Roadmaps* show what we can do to create healthier places to live, learn, work, and play.



Build a Roadmap

for your community

- Select -

[NEXT PAGE >>](#)



Visit the Action Center

The [Roadmaps to Health Action Center](#) provides tools to help groups working together to create healthier places to live, learn, work and play.

Improving community health requires people from multiple fields to work collaboratively on an ongoing cycle of activities. Communities may be at different points in this process. Click on various components of our action cycle for



ROADMAPS TO HEALTH ACTION CENTER

LEARN

County Health Rankings Data Drilldown
Exploring the Data
County Health Rankings & Roadmaps Webinar

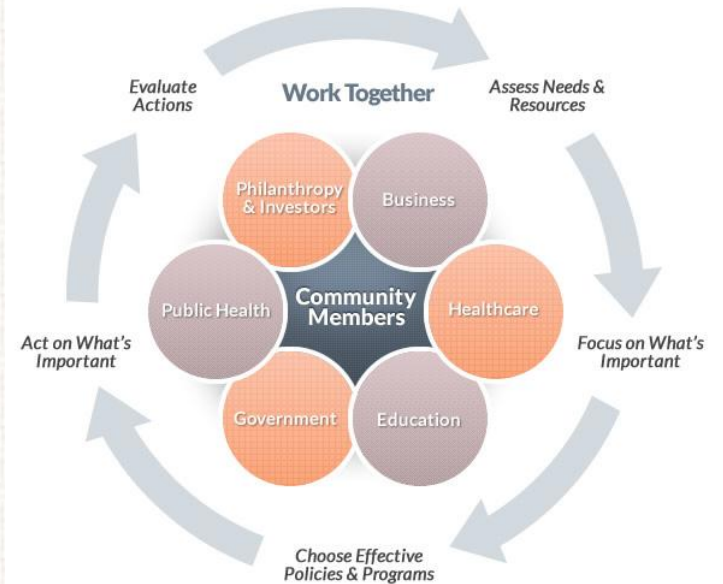
COMMUNICATE

County Health Rankings & Roadmaps for Key Messages
Writing About the County Health Rankings & Roadmaps
Writing a County Health Rankings & Roadmaps Op-Ed
County Health Rankings & Roadmaps Presentation

ORGANIZE

County Health Rankings & Roadmaps Guide to Funding Your Community Health Initiative
Work Together Guide

TAKE ACTION





ASSESS NEEDS & RESOURCES

One of the first steps in local health improvement is to take stock of your community's needs, resources, strengths, and assets. You will want to understand what helps as well as what hinders progress toward improving your community's health.

A large orange square containing the word "ASSESS" in bold, white, uppercase letters. The word has a subtle reflection effect below it.

Purpose

Understand current community strengths, resources, needs and gaps to help you decide where to focus your efforts.

Who to Involve

Multi-sector team of partners (including leaders and stakeholders from business, healthcare, education, government, public health, funders, and community organizations) as well as anyone who cares about or is affected by health issues in your community

What to Do

Review the descriptions below and expand the most relevant sections to find the activities and tools for your community.

+ Start

We need to collect data, but we aren't sure where or how to start.

+ Act

We are collecting a variety of data, but we could use some help interpreting what it means and moving forward.

◀ Previous Step

Review activities, tools and resources from WORK TOGETHER.

Next Step ▶

Now that you've assessed your needs and resources, it's time to start thinking about how you will FOCUS ON WHAT'S IMPORTANT.



- Start

We need to collect data, but we aren't sure where or how to start.

Key Activities

- Review your *County Health Rankings* snapshot
- Define your community
- Generate questions about your community
- Identify measures and sources of data that will help you answer questions about your community
- What's missing? Identify any additional qualitative and quantitative sources of data that will help answer your questions (e.g., focus groups, community surveys)
- Collect information

Tools

- *County Health Rankings & Roadmaps* Data Drilldown
- *A Handbook for Participatory Community Assessments* (PDF from the Alameda County Public Health Department)
- *Developing a Plan for Identifying Local Needs & Resources* (from the Community Tool Box)
- *Assessing Community Needs and Resources* (from the Community Tool Box)
- *Community Assessment Tools* (PDF from Rotary International)

Find more tools in the [Assess Needs & Resources: Start Guide](#)

Get Help from the *Rankings & Roadmaps* team



ASSESS NEEDS & RESOURCES: START GUIDE

Key Activities

- Review your *County Health Rankings* snapshot
- Define your community
- Generate questions about your community
- Identify measures and sources of data that will help you answer questions about your community
- What's missing? Identify any additional qualitative and quantitative sources of data that will help answer your questions (e.g., focus groups, community surveys)
- Collect information

Review your *County Health Rankings* snapshot

The *County Health Rankings* provide a snapshot of a community's health and a starting point for investigating and discussing ways to improve health. Start by reviewing your county snapshot along with the *County Health Rankings Data Drilldown Guide*.

To find your county snapshot, go to www.countyhealthrankings.org and select your state from the map, then your county (or enter your county name in the Search box). From your snapshot, you'll be able to review data used to calculate your county's current *Rankings*. Snapshots also include Additional Measures with data that is not used to calculate your county's rank but is useful to further understand your community.

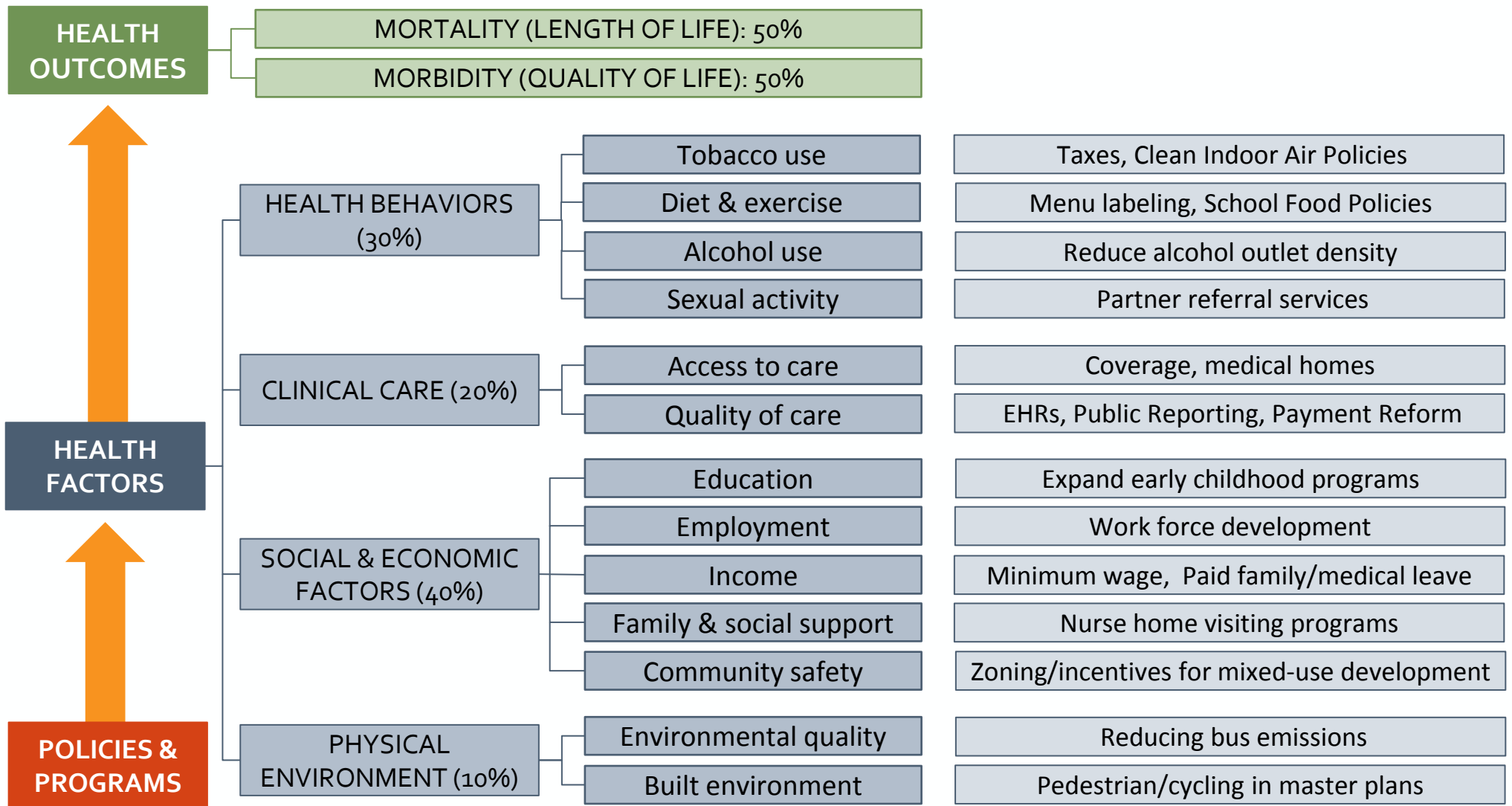
The *County Health Rankings Data Drilldown Guide* will help you interpret the data included in your snapshot and think about additional questions and sources of data.

Suggested tools:

- *County Health Rankings Data Drilldown Guide* provides suggestions for finding more detailed information about key areas in your community's rankings.



POLICY ORIENTATION





HTTP://WHATWORKSFORHEALTH.WISC.EDU/



Search Policies & Programs

exact match

Display All Policies & Programs

Contribute Content

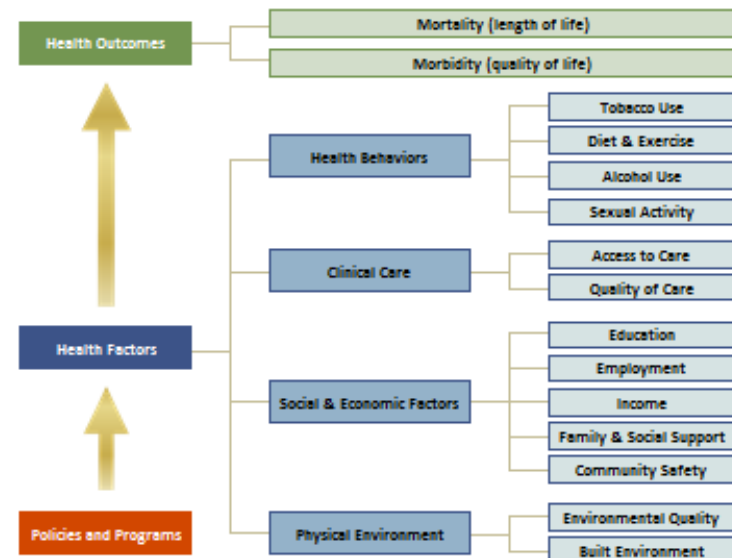
An Evidence-based Resource: Policies and Programs to Improve Wisconsin's Health

What Works for Health is a database of policies and programs that can improve health. These policies and programs address key health factors that, in turn, improve health outcomes. This database is based on a wide scan of and does not work to help different stakeholders (such as public health practitioners, community organizations, businesses, schools, and others) identify policies and programs that could improve health.

Policies and Programs

The research underlying this site is based on a model of population health that emphasizes the many factors that can make communities healthier places to live, learn, work, and play. For each health factor, this database reviews Wisconsin and elsewhere, resources related to effectiveness and implementation, potential reach and impact on disparities, and other key information. It also provides opportunities to learn from communities that use these pol

To find a policy or program click on a health factor (in the blue boxes below), search by keyword (see top of left column), or search by one or more of the following: decision maker; evidence rating; potential population reach; o





NUTRITION & PHYSICAL ACTIVITY

WHAT WORKS

- ▶ Point of Decision Prompts (Motivational signs by stairs or elevators)
- ▶ Breastfeeding Promotion Programs
- ▶ Enhancing or Expanding School-based Physical Education Programs
- ▶ Competitive Pricing in Schools (Making the unhealthy foods more expensive)



ACCESS TO CLINICAL CARE


WHAT WORKS OR PROBABLY WORKS

- ▶ Community Health Workers
- ▶ Telemedicine
- ▶ Medical Homes
- ▶ Expand BadgerCare eligibility and increase enrollment for those who are eligible
- ▶ Expand scope of practice for dental hygienists or nurse practitioners



ROADMAPS TO HEALTH PRIZE

Go to: <http://www.countyhealthrankings.org/roadmaps/prize>



Throughout the country, people are coming together with a shared vision, strong leadership, and commitment to making needed and lasting changes that broadly improve community vitality. This is happening in large urban settings and small rural ones; it's happening in places with tremendous resources and in places with few resources to draw from; it's happening in places with relatively few health challenges and in places where the challenges are many and daunting. The *Roadmaps to Health* Prize is intended to honor these successful efforts and to inspire and stimulate similar activities in communities across the country. The invitation to apply for this prize is being extended to all communities throughout the U.S.

[Call for Applications \(PDF\)](#)

[Get started with the online application](#)

[Preview Notice of Intent to Apply & Full Application \(PDF\)](#)



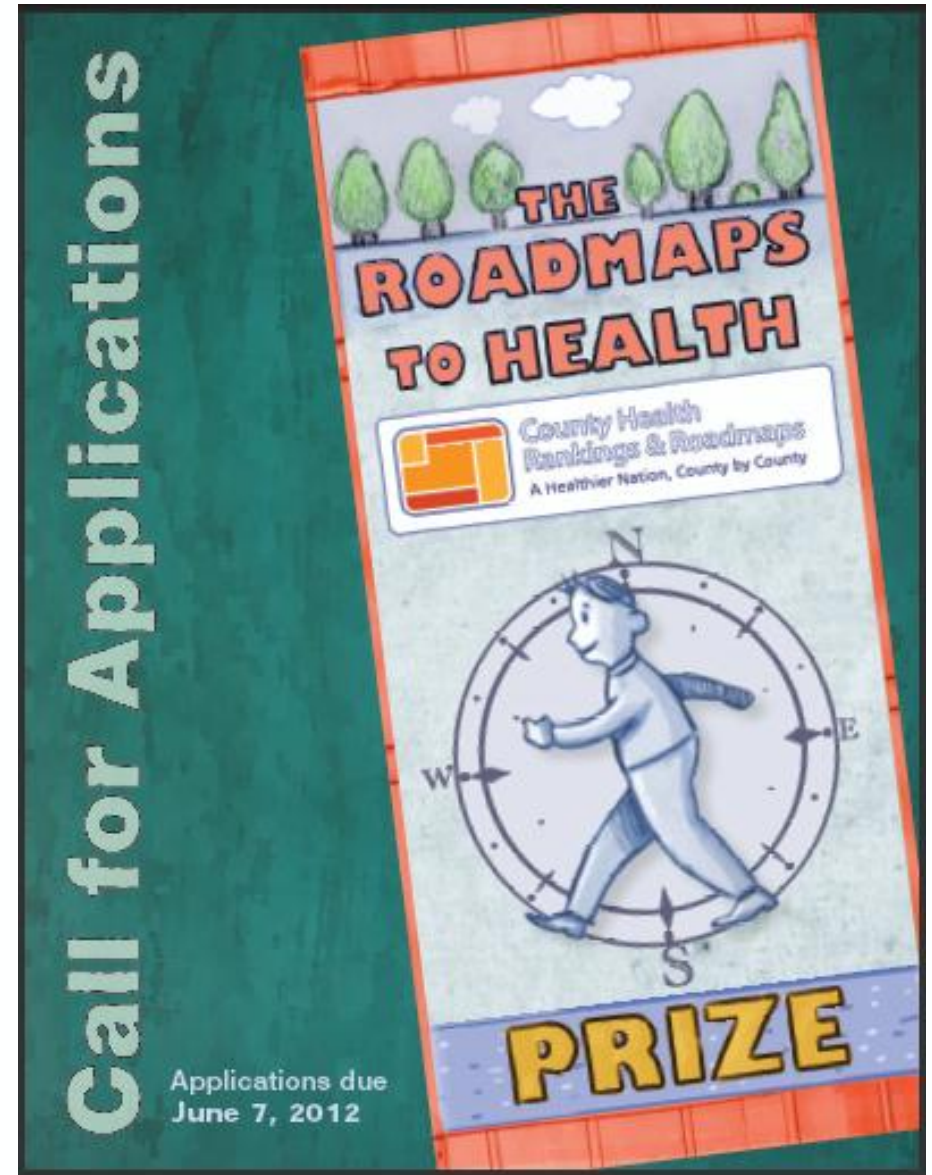
www.countyhealthroadmaps/prize

*Short notice of intent
due by 5/31/12*

Applications due 6/7/12

*Written application
includes*

- *Community Description*
- *Four health accomplishments*
- *Optional multi-media presentation (4 minute maximum)*





THANK YOU!

www.countyhealthrankings.org

Bridget Booske Catlin

(608) 263-1947

Bridget.Catlin@match.wisc.edu

Julie A. Willems Van Dijk RN PhD

(608) 263-6731

willemsvandi@wisc.edu